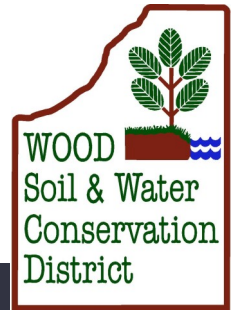


Eye on Conservation

WORKING LOCALLY, THINKING REGIONALLY



Wood Soil & Water Conservation District Newsletter

Winter 2018

The 68th Wood SWCD annual meeting, election, awards banquet, and 5th annual conservation ATV tour was held at the Agricultural Incubator Foundation (AIF) on Saturday, September 16th. The district board of supervisors election was held 11 a.m.—1 p.m. Lunch was catered by Alex's Catering Service, a tenant of the Northwest Ohio Cooperative Kitchen at the AIF. Guest speaker and local author, Nathan Crook, Ph.D. professor at ATI, Wooster, gave a presentation on the Great Black Swamp.

Steve Benner, Portage, Bernie Scott, Tontogany, and Ron Snyder, Pemberville, were the candidates for the election. Incumbents, Bernie and Ron were each elected to serve three-year term beginning January 1.

The ATV tour started the day with registration at 8:00 a.m. at AIF. The first stop of the morning was at Easily Green and Renewed Outdoors, a lawn care and yard waste recycling facility on route 25 in Perrysburg. Owner, Andrew Kramp, provided a tour of the facility. This unique facility provides the residents of the city of Perrysburg a free drop off location for their grass clippings, tree branches, and other yard waste. The yard waste is processed and turned into soil amendments and mulch. (continued on pg. 3)



*No winter lasts forever;
no spring skips its turn.*

- Hal Borland



L to R: Lee Sundermeier, Bernie Scott, Ron Snyder, Dennis Ferrell, and Kris Swartz

WOOD SWCD
OFFICE HOURS
7:30 A.M.—4:30 P.M.
MONDAY—FRIDAY



The Wood SWCD
Board of Supervisors holds
regular monthly meetings the
third Friday of each month at
8:00 a.m. at the district office.



Pedaling Through the Parks

“Boots on the Ground” - Julie Lause

Over the years, my husband, Eric and our daughter, Olivia, and I would load up the our bikes and pedal our way around Maumee Bay State Park, Harrison State Park, and the local bike trails; we didn't travel too far from home with the rickety bike rack on the back of the car. We spend a few hours enjoying scenery and beautiful weather, and ending the trip with a stop at a local ice cream shop.

As I took classes to become a certified Master Gardener or would learn something new from a workshop or training through our district office, I started to look at the scenery a little closer. I'd attempt to ID a tree, guess the names of the birds, or scan a plant with my new plant ID app. It was a game for me. Eric and Olivia didn't really want to play along. They didn't consider it a learning opportunity. Their ride was simply recreational.

Now that our daughter is finishing college, Eric and I will a few days to sightsee and include a visit to a few parks. We no longer take the bikes on the rickety rack; we rent really nice bikes at the parks. This fall, we pedaled around Allegany State Park in New York and Presque Isle in Erie, Pennsylvania. Beautiful sites and rich with history. Eric has more patience with me, now, and will at least pretend to be interested as I still guess the species of trees, point out the native and invasive plants, or stop to take a picture of a butterfly.

We've learned to experience the opportunities in the parks together. I'll stop to take pictures and Eric will still pedal ahead of me. I'll catch up to find him sitting along a shore watching the water. He tells me about the fish and I show him my pictures. We race back to return the bikes because we lost track of time and then head for the nearest ice cream shop. It's a good day.

“Boots on the Ground” is an addition to our quarterly newsletter highlighting an experience, quotes, quips, and commentary offered by the supervisors and staff of the district.

Native Plants Resources

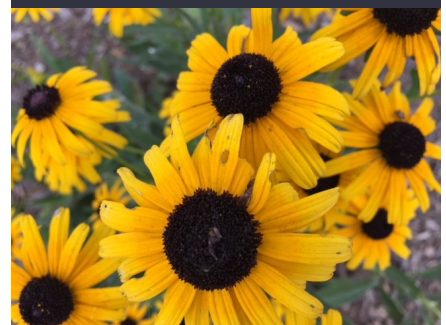
Local seed swaps are good places to find native wildflower seeds. Look for the events on social media, newspapers, and TV.

Toledo Grows Seed Swap
Saturday, February 24
12—3
Scott High School

Commercial Seed Sources

Earth Sources, Inc.
www.earthsourceinc.net

Ohio Prairie Nursery
www.ohioprairienursery.com



A plant is considered native if it has occurred naturally in a particular region, ecosystem, or habitat without human introduction.

<https://www.nwf.org/Garden-for-Wildlife/About/Native-Plants>

(continued from pg.1) The second stop was at a residential home landscape in a Perrysburg neighborhood where Hal Mann and his wife, Ginny, replaced their traditional non-native shrubs and plants with native plants. Once established, native plants can take over the landscape. The plants support a wide range of native wildlife, but finding the balance between a manicured lawn and native plant gardens was a challenge.



The third stop on the ATV tour was at the Bowling Green Water Treatment plant. The City of Bowling Green draws water from the Maumee River when the water quality is high. It is then stored in above ground reservoirs for use when the river water quality is low. The drinking water is closely monitored and goes through a 10-step treatment process to ensure quality drinking water.



The final stop was back at AIF where tours of the grounds were available following the annual meeting.

During the lunch meeting, awards were presented to local producers and community members for their conservation efforts and partnership with the Wood SWCD. Cline Brothers Dairy was recognized as the *Outstanding Cooperator* and Riker Farm Seed as the *Friend of the District*.



Two students were awarded the John Hirzel Memorial Scholarship. Erin Graves and Lydia Tressel. Erin is a senior at Miami University of Ohio majoring in geology and environmental science with plans to attend graduate school for a Master's degree in Environmental Science. Erin's long term goal is to work in



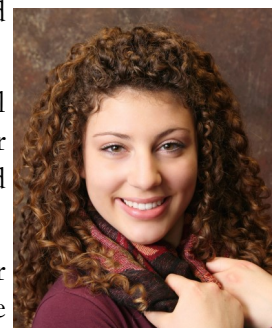
environmental policy involving farmers, educators, and politicians to ensure good water, soil, and air quality for future generations.

Lydia is also a senior at Miami University majoring in Botany with a long term goal of earning a Ph.D. in plant systematics. Through her education, Lydia hopes to lead students in continued research and become a professional botanist.



Lydia Tressel

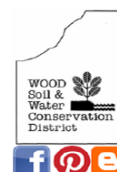
Thank you to all for your support and contributions to your local conservation district. We strive to provide the resources and education in making good, positive choices in conservation practices. Please contact the district with your suggestions for programs and technical assistance.



Erin Graves

No conservation ATV tour is planned for this year. Be sure to save the date for the *Wood County Ag-Venture Self-Driving Farm Tour* on Saturday, September 15 to highlight what local farmers and partners are doing with agriculture in Wood County.

WOOD SOIL & WATER CONSERVATION DISTRICT
2018 TREE & SHRUB SEEDLINGS SALE
ORDER FORM
(Order Deadline: February 28)



NAME	EMAIL
ADDRESS	
CITY	STATE
ZIP	PHONE

(10 PLANTS PER PACKET)		PRICE PER PACKET	NUMBER OF PACKETS ORDERED		TOTAL
Conifers					
American Arborvitae	Seedlings 12"-18"	\$12.00	x	=	
Colorado Blue Spruce	Seedlings 12"- 18"	\$12.00	x	=	
Norway Spruce	Seedlings 14"- 18"	\$12.00	x	=	
Concolor Fir	Seedlings 8" - 14"	\$12.00	x	=	
White Pine	Seedlings 8" - 14"	\$12.00	x	=	
Bald Cypress	Seedling 18"-24"	\$12.00	x	=	
Hardwoods/Nuts					
Swamp White Oak	Seedling 12"-18"	\$11.00	x	=	
Red Maple	Seedling 12"-18"	\$11.00	x	=	
Pin Oak	Seedling 12"-18"	\$11.00	x	=	
Sycamore	Seedling 12"-18"	\$11.00	x	=	
Ohio Buckeye	Seedling 12"-18"	\$11.00	x	=	
Wildlife Shrubs					
Red Bud	Seedling 12"-18"	\$10.00	x	=	
Common Lilac	Seedling 18"-24"	\$10.00	x	=	
Butterfly Bush	Seedling 12"-18"	\$10.00	x	=	
Highbush Cranberry	Seedling 12"-18"	\$10.00	x	=	
Sargent Crabapple	Seedling 12"-18"	\$10.00	x	=	
Edibles					
Red Raspberry (Latham, Mammoth Red) 5 per packet		\$15.00	x	=	
Black Raspberry (Jewel, Bristol, Cumberland) 5 per packet		\$15.00	x	=	
Conifer Packet	2 ea./ 5 conifer varieties	\$12.00	x	=	
Hardwood Packet	2 ea./ 5 hardwood varieties	\$11.00	x	=	
Wildlife Packet	2 ea./ 5 shrub varieties	\$10.00	x	=	
Cone-A-Fir Tree Protector		\$2.50	x	=	
100 Marking Flags		\$9.00	x	=	
10 Marking Flags		\$1.00	x	=	
*Wildflower Seeds Not Available *					
				TOTAL	\$

Please fill out the order form above and return with check before February 28, 2018
 Make check payable to the Wood SWCD, 1616 E Wooster St Suite 32, Bowling Green, OH 43402
****We do our best to obtain the best quality nursery stock, however, survival of the plants is beyond our control.****
****We will not be responsible for refund or replacement of stock which does not survive.****
Quantities limited please place your orders early.

American Arborvitae *Thuja occidentalis* is a dense, pyramidal evergreen tree. Main trunk often divides into several leaders. The branches with scale-like foliage are displayed in horizontal sprays. Fruit is a small (3/8") light brown cone. Needs a moist rich soil, somewhat tolerant to wet soils.

Colorado Spruce *Picea pungens 'glauca'* is a stiffly pyramidal evergreen conifer. Horizontal branches reach to the ground, but form may become more open with age. Foliage occurs in a wide range of colors from green to silver blue. Prefers a moist, well-drained soil but will tolerate drier soil. Adaptable to a wide range of conditions. Full sun, especially for blue foliage types which will lose "blueness" in shade.

Norway spruce *Picea abies* is a large conifer that is well adapted to much of the upper Midwest. It is faster growing than many of the other spruces. Foliage color is dark green. Norway spruce produces pendulous cones up to 6" long. Prefers soil with ample moisture. Transplants well. Best in full sun, since foliage becomes sparse in shade.

Concolor Fir *Abies concolor* is an evergreen with flat, varying green to deep blue needles, 1½" to 2" long, a hardy tree stands dryness and high temperatures better than other firs.

White Pine *Pinus strobus* is a hardy, valuable tree. Clustered soft blue-green needles. Ideal screen or windbreak. Likes moist, well-drained soils. Grows 50'- 80' with a 20-40' spread in the landscape.

Bald Cypress *Taxodium distichum* is a stately deciduous conifer adaptable to wet or dry conditions. Best known in wet areas. Prefers acid soils. Grows to 50' - 70', 25' spread.

Swamp White Oak *Quercus bicolor* has a broad oval to round crown. Is found in the wild in moist lowland sites. It also does well in upland sites in the landscape. Leaves are medium green above and silvery green beneath. Fall color is yellowish tan to orange brown. Tolerant of heavy soils. Good tolerance to poor drainage. Drought tolerant. Requires a somewhat acid soil.

Red Maple *Acer rubrum* brings color to your landscape year-round. Green stems turn red in winter; new leaves are red-tinged, turning to green. Fall color is deep red or yellow. Flowers are also red. Fast growing and tolerant of many soils. Grows to 40' to 60', 40' spread

Pin Oak *Quercus palustris* prefers moist, acidic soil but will adapt to local soils as a seedling. It thrives in full to partial sun. It can grow rapidly and reach 40' wide by 70' tall.

Sycamore *Platanus occidentalis* prefers deep, moist, rich soils of variable pH that are either well-drained or moderately drained, as it is often found naturally along the edges of bodies of water, and in wet areas of fields or woodlands. Easily reaches heights of 80 feet tall and 60 feet wide, but can grow much larger.

Ohio Buckeye prefers moist, well-drained soils of variable pH that are rich and deep, in partially sunny to partially shaded conditions. It adapts to average soils that are occasionally dry, but moderate to heavy leaf scorch will develop by mid summer, especially when sited in full sun. Ohio Buckeye prefers shady conditions in its youth, but grows in full sun to full shade from youth through maturity.

Red Bud *Cercis Canadensis* is a small to medium size ornamental tree with small pinkish-purple flowers in the early spring and large dark green heart shaped leaves. Grows to 25-35 feet.

Common Lilac *Syringa vulgaris* is well-known and loved by gardeners all over the world for its beauty and fragrance. One of the most powerful fragrances emitted by a plant. Used as a hedge or as an individual accent plant. It has light purple flowers occurring in clusters amid the dark-green heart-shaped leaves. A mature common lilac shrub growing in ideal conditions can reach a height of 10' to 15' and width of 4'.

Butterfly Bush *Buddleia davidii* is a deciduous shrub with arching branches that can reach a height of 15 feet. The showy flower spikes are often purple, and the leaves and stems are typically hairy.

Highbush Cranberry *Viburnum trilobum* prefers moist to wet soils of rich or average composition, and of acidic pH. However, it tolerates dry soils of acidic, neutral, or alkaline pH reasonably well. It thrives in full sun to partial sun, and performs well in partial shade to full shade, although its growth habit will be much more gangly. Can grow to 12' tall and 12' wide.

Sargent Crabapple *Malus sargentii* is native to Japan, but widely planted as an ornamental Crabapple throughout the Eastern United States. It is known for its fragrant blossoms that are red in bud and white when fully opened, and for its small, bright red to dark red fruits, borne in copious amounts at least every other year (and which are loved by wildlife). It reaches 8 feet tall by 15 feet wide

Red Raspberry *Rubus idaeus*, Latham prefers organic, well-drained, slightly acidic, sandy loam soil. Disease resistant. The standard for Spring-bearing red raspberries. Full flavored, aromatic fruit that is somewhat non-cohesive. Vigorous, highly productive. Ripens evenly over a 3 week period.

Black Raspberry *Rubus occidentalis*, Jewel prefers to grow in average to moist conditions, and shouldn't be allowed to dry out. Prefers organic soil and the soil should be well drained. The ideal soil pH should be 5.8 to 6.5.

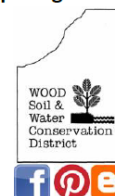
www.arboday.org

www.odnr.state.oh.us

www.plants.usda.gov/plantguide

419-354-5517

www.woodswcd.com



2017 Nutrient Bus Tour

This year's Nutrient Bus Tour highlighted new technology that farmers across Ottawa, Sandusky and Wood Counties are using to better manage nutrients on their farms. About 120 people attended the tour, participants ranged from farmers, to elected officials, to those who are interested in learning more about the use and loss of nutrients in the Western Lake Erie Basin (W.L.E.B.). Two buses rotated between four different stops. Two were in the morning and the other two in the afternoon. The stops included: Naomi Dairy- Cygnet, Ohio, Tindal Bridge- Fremont, Ohio, Kevin and Andy Fox Farms- Graytown, Ohio and Greenfield Ag- Gibsonburg, Ohio.

Naomi Dairy has around 100 cows, and the operation is managed by robots that milk the cows. Participants learned about how the farm recycles almost every nutrient that is produced on the 300 acre farm.



Tindal Bridge is a water testing location for Heidelberg University; employees of the National Center for Water Quality manage the site and presented information regarding the data that has been collected at the site.

Kevin and Andy Fox Farms built a storage facility for bio solids in 2016, the material comes from the City of Toledo and is spread on their

farm and others close by. Synagro is the company that manages the bio solids and they presented information regarding the material to the attendees, along with showing them the storage facility and the bio solid material.



Greenfield Ag is a consulting company that helps farmers implement technology into their current equipment, this helps farmers

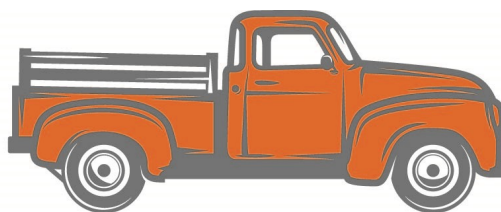
become more efficient in their planting, harvesting, and when they spread fertilizer.



The tour was sponsored by Ohio Farm Bureau, TMACOG, The Andersons, National Wildlife Federation, Seneca County Farm Bureau and Soil and Water Conservation Districts of Ottawa, Lucas, Sandusky, Seneca, and Wood Counties. Thanks to the sponsors, the event was free for the participants and breakfast and lunch was included. The tour is planned to happen again next year, for the third consecutive year.

If you are interested in learning more about the tour, or would like to be attend to the invite list for next year, please contact the district office.

UPCOMING Events



WOOD COUNTY AG-VENTURE A SELF-DRIVING FARM TOUR

January

Tree Seedling Sale

Orders due February 28

Soybean Inputs-Focus on Payback

Jan. 9 8:30-10:30 am

Wood County Extension Office

or

Jan. 11 6:30-8:30 pm

Hancock County Extension Office

Corn Soybean Day

Jan. 19 8:30-4:00

Founder's Hall at Sauder Village, Archbold

SWCS Annual Conference

Jan. 19 9:30-4:00 pm Der Dutchman Restaurant, Plain City

February

Soil Health Workshop

Feb. 6 8:00– 4:00 pm

Luckey Farmer's General Office, Woodville

Northern Ohio Crops Day

Feb. 8 8:00—4:00 pm

Ole Zim's Wagon Shed

March

Soil Health Workshop

March 28 8:00-4:00 pm

Northwest State Community College

Follow the Wood Soil and Water Conservation District on Facebook, the blog and check the website for details about each event.

Save the Date!

Agriculture is a vital industry in Wood County. Fields of corn, soybeans, and wheat are seen as we drive through the county or even in our own backyards, yet do you know where those products go once they are harvested?

Saturday, September 15, 2018 from 10 a.m. – 5 p.m., the Wood Soil and Water Conservation District is partnering with county organizations and businesses to host a Wood County AG-Venture Self-Driving Farm Tour. Local agriculture industry leaders are opening their homes and businesses throughout Wood County to highlight Ohio's #1 Industry – agriculture.

Visit the stops through-out the day at your own pace to sit in farm equipment, pet farm animals, talk to farmers, and learn what agriculture is in Wood County.

The Ag-Venture stops include:

Vetter Farms, Bowling Green
Hirzel Canning, Northwood
Luckey Farmers, Perrysburg
Moser Farms, Perrysburg
Pioneer Hi-Bred, Grand Rapids
Inspired by Nature, Weston
Black Swamp Ag, Bowling Green

Manure application reminder!

Frozen and snow covered conditions are upon us. Please keep Senate Bill 1 in mind when applying manure and/or fertilizer.

Manure and fertilizer cannot be applied to frozen or snow covered ground unless there is a growing crop.

Application to saturated ground is also prohibited.

Contact the district office with questions or concerns.

419-354-5517



Board of Supervisors

Bernie Scott, Chairman
Dennis Ferrell, Vice Chairman
Kris Swartz, Fiscal Agent
Ron Snyder, Secretary
Lee Sundermeier, Member

District Staff

Nicki Kale, District Administrator/
Education Coordinator
Jim Carter, District Administrator/
Engineering & Technical Coordinator
Jeremy Gerwin, District Technician
Beth Landers, Portage River Watershed
Coordinator
Abby Wensink, Strategic Watershed
Action Team Conservationist
Julie Lause, Administrative Assistant
Shelli Stockmeister, WLEB Nutrient
Management Specialist

NRCS Staff

Becky Duncan, District Conservationist
Kelly Copeland, Resource Conservationist
Equal Opportunity Employer and Provider

Equipment for Rent

Great Plains Drill

(for CRP Practices only)

- 10' working width
- 7 1/2' row spacing
- Minimum 65 hp with live hydraulics

Rental Rate is \$10.00/acre
(\$50 minimum)

Delivery Charge \$20.00

Cleanout Charge \$25.00
(if applicable)

Dibble Bar

\$40 Refundable Deposit

Tree Planter

\$25.00 First Day

\$45.00 Each Additional Day

Weed Wrench

\$225 Refundable Deposit

\$20 Rental 1-3 Days

\$20 Each Additional Day

Items for Sale

Floating Pond Filter	\$245.00
Pond Filter Float	\$ 92.00
Replacement Filter	\$ 55.00
Pond Safety Kit	\$110.00
Ring Buoy	\$ 64.00
Deep Water Sign	\$ 14.00
Rope (per foot)	\$ 0.25
Tile Probes	\$ 33-35
Soil Test Probe	\$63 & 95
Garden Soil Test Kits	\$ 25.00
Tree Protectors	\$ 2.50
Tree Wraps with Stake	\$ 4.00
Flags	\$ 0.10 ea
100 4x5	\$ 8.00
100 5x8	\$ 9.00
6' field flag	\$ 7.00
Nut Wizards®	\$ 40-45
Compost Bin	\$ 50.00
Rat Guards	
4"	\$ 5.00
6" stainless steel	\$ 10.00
8" stainless steel	\$ 12.00
10" stainless steel	\$10 & 18
12" stainless steel	\$15 & 28
15"	\$ 25.00

(Cash or Check payable upon receipt)

***For Wood County
Residents Use Only***

Promoting Conservation Ag to Urban Communities

Contact Us

Wood SWCD
1616 E. Wooster St.
Suite 32
Bowling Green, OH
43402

Phone: 419-354-5517

Fax: 419-354-7923

wcswcd@woodswcd.com

Visit us on the web at
www.woodswcd.com



Current Resident or